

maker  
SKAPA

RESIDENTIAL COLLECTION

# OK HOUSE

SLIM FIT



## CONNECT WITH US!

### DESIGN TEAM:

MIGRATION.ECO

VELOCIPEDA ARCHITECTS

GREG GILDA STRUCTURAL

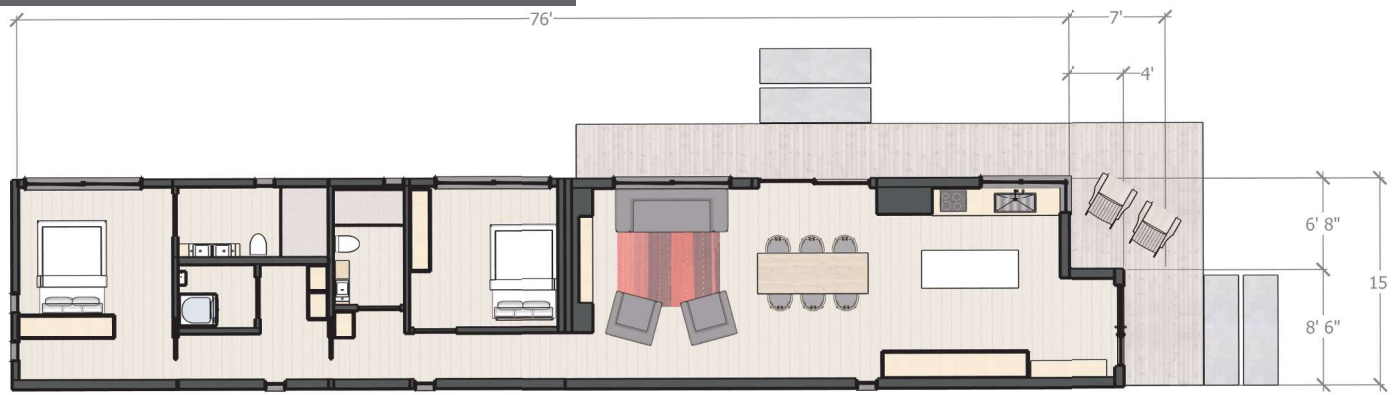
SINGLE FAMILY SYSTEM STARTING FROM 150,000

DUPLEX SYSTEMS STARTING FROM MID 300'S

TRIPLEX CONFIGURATIONS STARTING FROM MID 400'S

WHOLESALE PRICING AVAILABLE TO QUALIFYING NON-PROFIT ORGANIZATIONS

## OK HOUSE- SLIM FIT

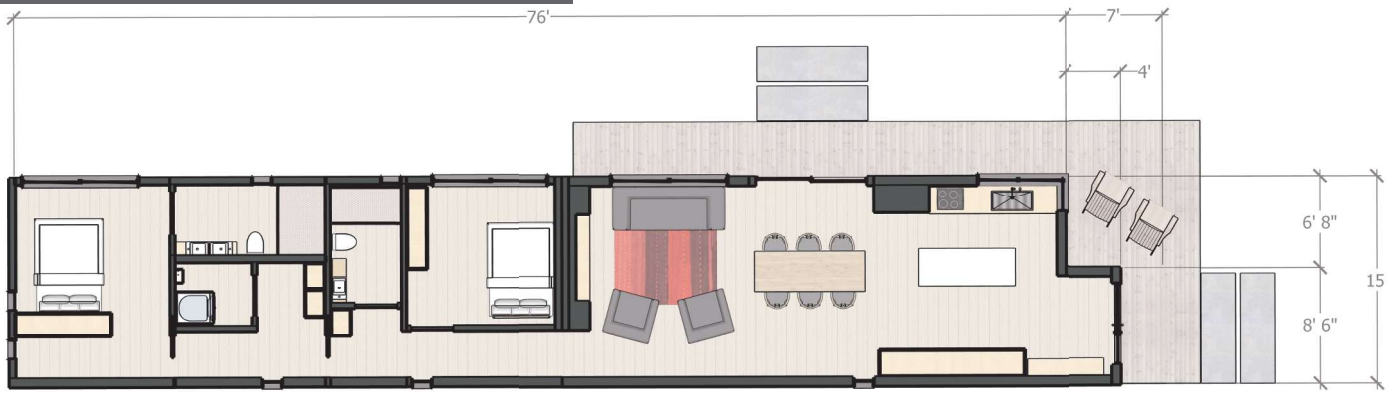


## BASIC FEATURES

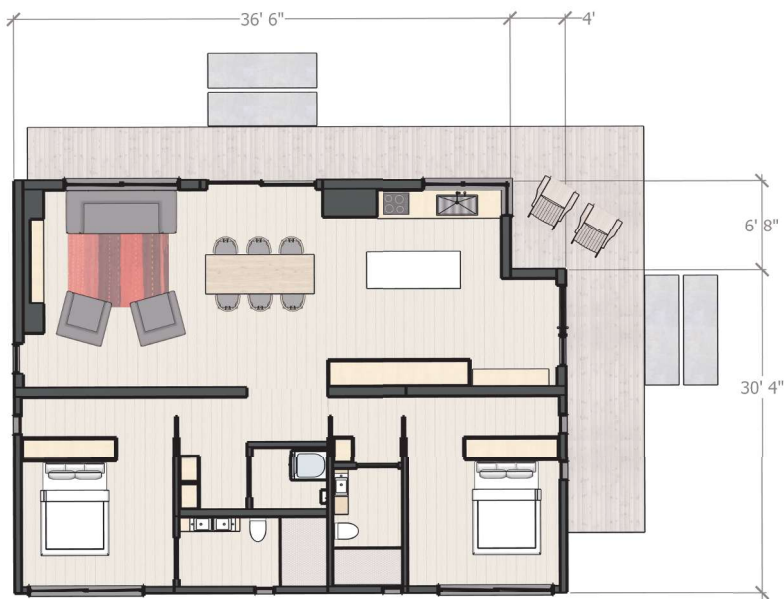
- 2 Bedrooms
- 1.5 Bathrooms
- 1200 SQ. FT. ft.sq
- Living Room
- Kitchen
- Dining Room
- Walk-in Closet



## OK HOUSE - SLIM FIT



## OK HOUSE - REGULAR FIT



## BASIC FEATURES

- 2 Bedrooms
- 1.5 Bathrooms
- 1200 SQ. FT. ft.sq
- Living Room
- Kitchen
- Dining Room
- Walk-in Closet

## PERFORMANCE DETAILS:

Resilience and Longevity

Solar Options Available

Low Carbon Concrete and Reduced Construction Waste

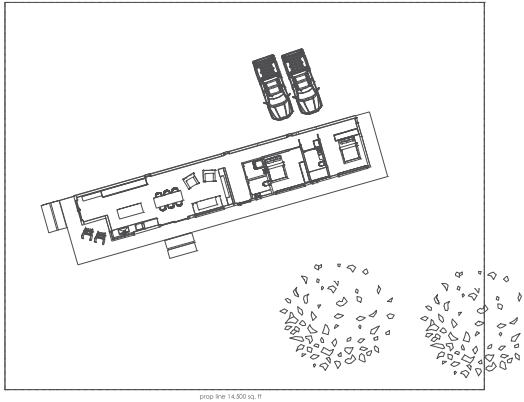
Green Workforce Development

Supports Affordable Housing Initiatives

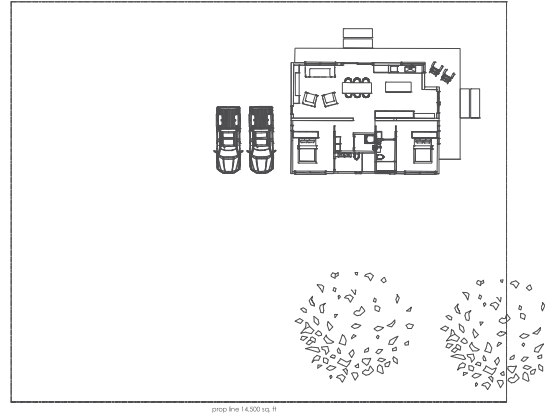
Shorter Project Schedules



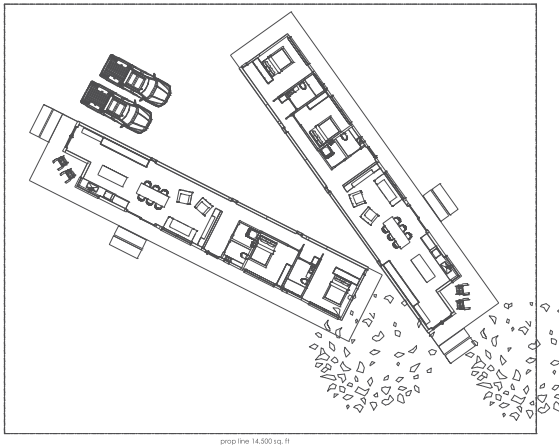
# FLEXIBLE CONFIGURATIONS:



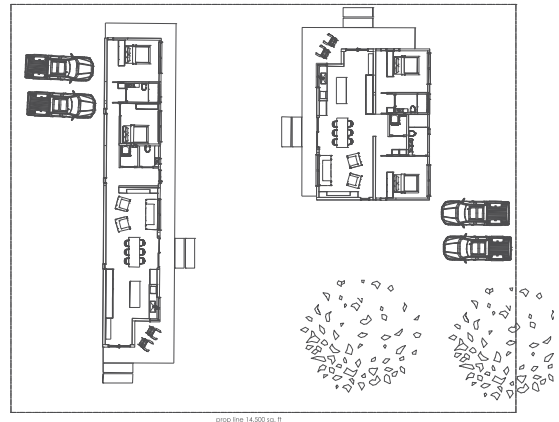
OK HOUSE - SLIM FIT



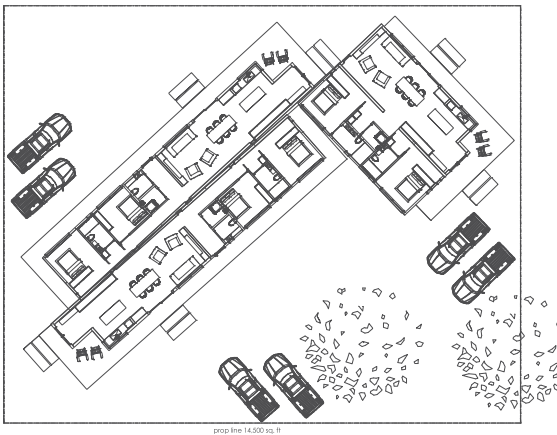
OK HOUSE - REGULAR FIT



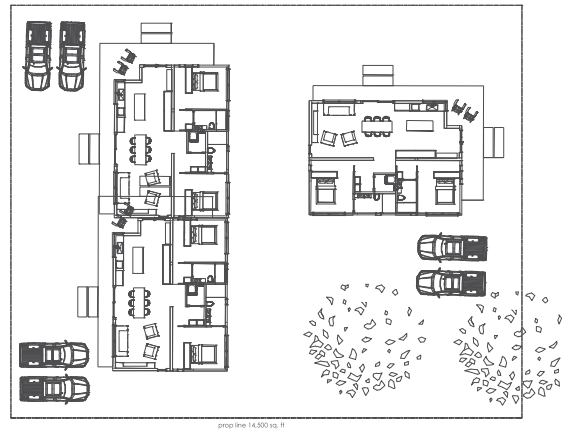
OK HOUSE - SLIM FIT FLARE



OK HOUSE - MODERN FIT



OK HOUSE - SLIM FIT LOW RISE



OK HOUSE - REGULAR LOW RISE